

Relius External Render Systems for Insulated Concrete Formwork (ICF)

Introduction

ICF's are becoming increasingly popular for many projects due to the speed of construction, energy saving benefits, design versatility and sustainability. Relius Render Systems are ideal for application to ICF structures.

Features and Benefits

- Cement based, polymer modified, reinforcement layer incorporating fibreglass mesh for increased crack resistance.
- Relius Silicone and Acrylic based finishing renders do not require over painting. They are vapour permeable yet weather resistant.
- Relius Silicone and Acrylic renders are supplied with Relius Algosilan fungicide. Delays the onset of algae growth on finishing renders.
- Relius Express grade silicone render allows application of finishing layer in temperatures from +1⁰C.
- Relius Silicone and Acrylic renders are available in over 500 colours.
- Other render materials available for detailing and features
- Relius render systems have been applied to EPS substrates for over 30 years and offer proven performance with many millions of square metres completed.



Surface Preparation

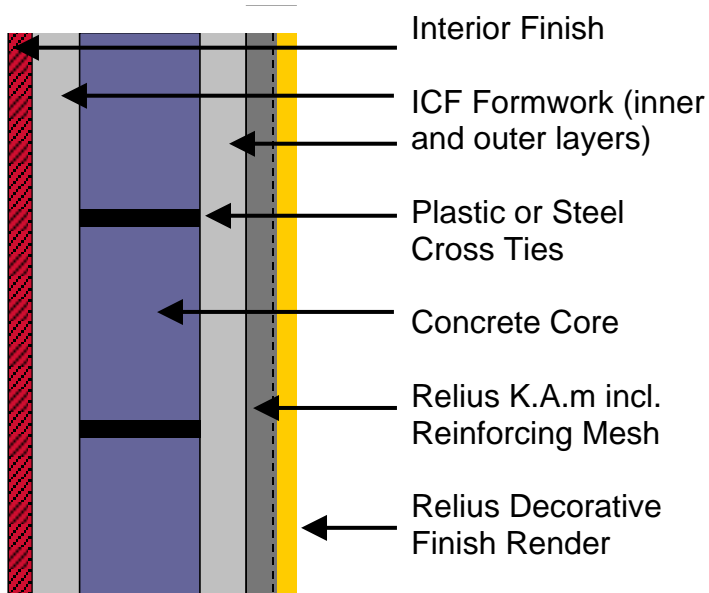
Key to the success of the system is the correct preparation of the substrate. Existing surfaces should be dry, sound, free from concrete splashes, etc.

System Description

After construction of the building to the required design using ICF blocks the finishing render can be applied as follows:

1. Relius K.A.m polymer modified, cement based, fibre reinforced basecoat. Applied at approximately 5mm. Consumption rate 1.2kg/m²/mm
2. Relius Reinforcing Mesh is a glass fibre fabric impregnated with an alkali resistant coating for ease of handling and durability. The mesh is embedded in the top third of the Relius K.A.m while still wet. (Consideration must be made for fire protection and possible damage by wind suction).
3. Relius K.A.m polymer modified, cement based, fibre reinforced basecoat. Applied at approximately 5mm. Consumption rate 1.2kg/m²/mm. Finished with either steel trowel or sponge float.
4. Relius Putzhaftgrund intermediate primer
5. Relius Finishing Render: Silcosan Edelputz – silicone based through coloured render.

Total system thickness should be approx 12mm



Edelputz / Silcosan Edelputz K finish available in 4 aggregate sizes 1, 1.5, 2.0 and 3.0mm



Edelputz / Silcosan Edelputz R finish available in 3 aggregate sizes 1.5, 2.0 and 3.0mm



Technical Guidelines

Application – Relius renders are specialist systems and should only be applied by trained and approved contractors.

Detail Drawings – Please contact us for further information.

Corner Beads / Stop Beads – Use Relius proprietary beads, details on request.

Cold Weather Working – Relius Silcosan Edelputz is available in the Express grade to allow application at +1°C / 95%RH.

Specifications – Relius provide project specifications to ensure correct use of materials.

Please consult the relevant Technical Data Sheet for information regarding coverage rates, drying times etc.

Other Relius Product Ranges include:

- Interior Coatings
- External Insulated Façade Systems
- Industrial Coatings
- Protective Coatings for Steel and Concrete
- Varnishes and Glazes
- Façade Renovation Systems

Relius Coatings

BASF Coatings
Albany House
Swinton Hall Road
Swinton
Manchester
M27 4DT
P 0161 794 7411
F 0126 433 3433
E graham.barrett@basf.com